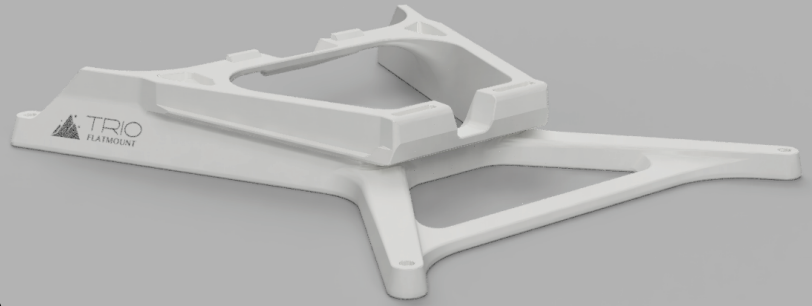


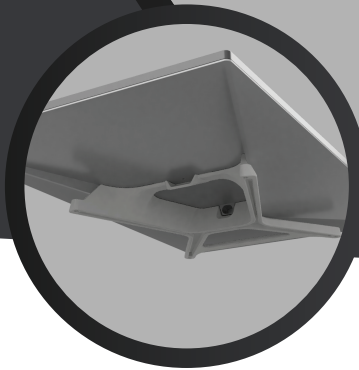


Gen 3 Flatmount

SKU: FLM-G3-BLK and FLM-G3-WHT



**Many Mounting
Accessories**



**Easy Tool-Free
Installation**



**Oversized Secure
Retainer Tabs**

Protective mounting for your Starlink investment

The TRIO Gen 3 Flatmount is the perfect, low profile solution for mounting your Starlink Mini dish in a secure and convenient way. Because it can be installed onto the Starlink dish without tools, it's setup is extremely quick and simple. Additionally, it doesn't increase the footprint of the dish at all, making it a popular option for tight spaces. Simply click your dish into the Gen 3 Flatmount and it's ready to be used. The Gen 3 Flatmount doesn't impede any Starlink features and provides excellent

access to all ports and power connections. The open top design allows the OEM functions like snowmelt and clear signal to remain unhindered. TRIO has many optional mounting accessories to ensure the Gen 3 Flatmount can be deployed in any environments and applications. All accessories have been tested for heavy, continuous use in marine, industrial, and recreational applications.

Features:

- Fits Starlink Gen 3 dish
- Available in Black and White
- OEM snap-on style fit on Starlink Gen 3 dish; doesn't require tools to install
- Suitable for protected in-motion use with wind block in front of Gen 3 Flatmount and Starlink dish
- Trusted by civilian and public sector

- Heavy Duty Injection Molded, UV Resistant ASA Plastic construction
- Withstands extreme temperature variation
- Less than 2.5 in/6.3 cm install height with Rubber Coated Magnets
- Provides secure mounting holes on exterior edge for increased mounting leverage

Whats Included:

- TRIO Gen 3 Flatmount



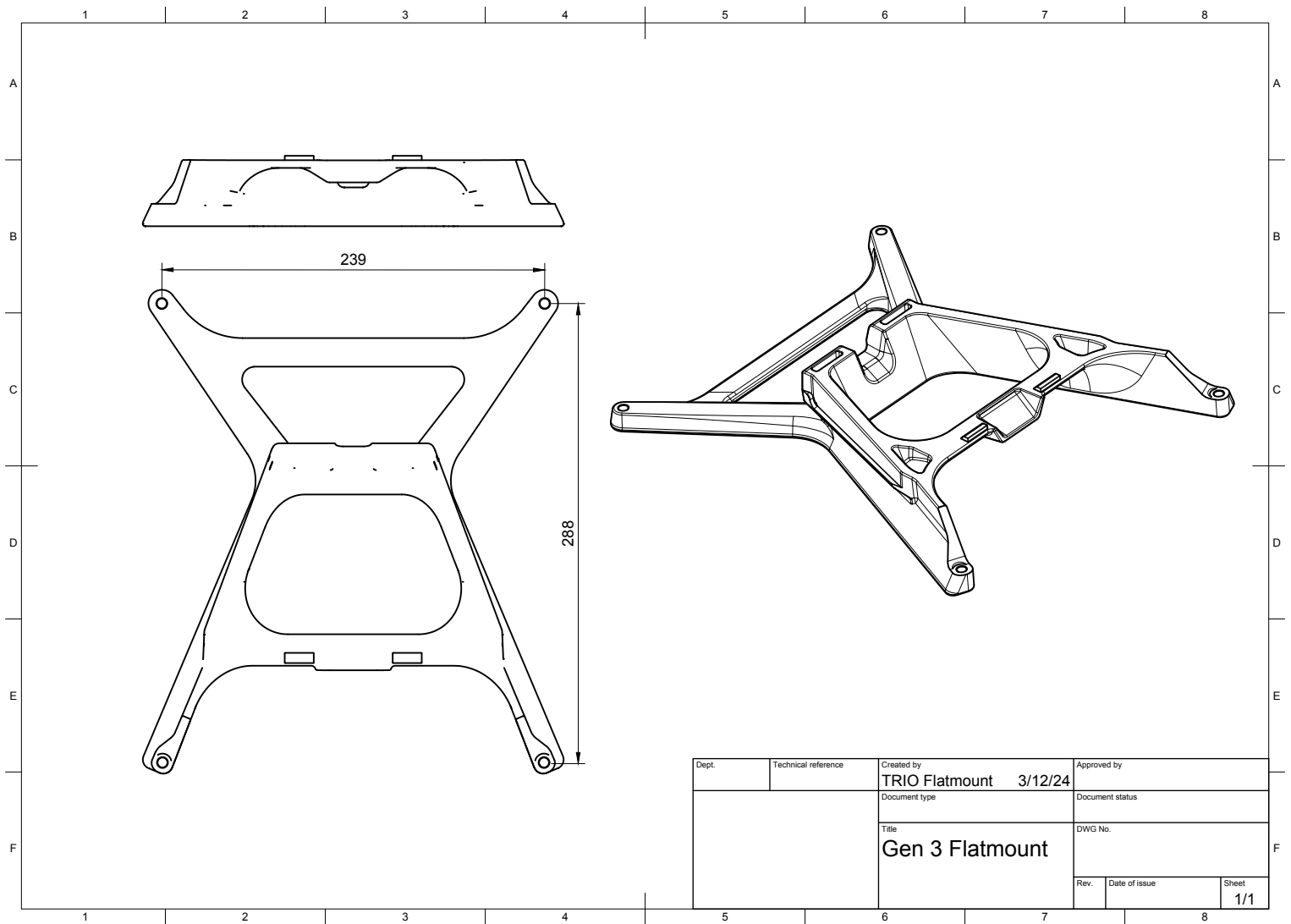
Contact@trioflatmount.com



www.TrioFlatmount.com



17632 Metzler Lane, Unit 102,
Huntington Beach, CA 92647



Technical Specifications:

Material: ASA UV Resistant Injection Molded Plastic

Temperature Range: -40°F to 150°F (-40°C to 65°C)

Weight: 1.2lbs (~544 grams)

HS Codes: 3926909988

UPC: (Black: 810185850099, White: 810185850068)

Compatibility: Starlink Gen 3 UTA-232 and all sub versions

Mounting Heights

Rubber Coated Magnets, inner position: 2 1/2" (63mm)

Heavy Duty Suction Cup: 4 1/8" (105mm)

Magnet with VHB Disc: 2 1/2" (65mm)

Through Bolting: 2 1/8" (55mm)



Contact@trioflatmount.com



www.Trioflatmount.com



17632 Metzler Lane, Unit 102,
Huntington Beach, CA 92647

Recommended Mounting Accessories

Rubber Coated Magnets:

Most popular mounting option. Approximately 60 lbs (27 kg) of holding force each, for a total of 240 lbs (108 kg) for each set of 4. Tested to 120 mph/190 kmh. Rubber coating prevents corrosion and protects painted surfaces.

Heavy Duty Suction Cups

Soft rubber suction cups hold approximately 65 lbs (27 kg) each. Pump action, ensures, secure grip. Suitable for removable use and will suction to non-porous substrates: Painted surfaces, glass, etc. Will not damage or mark surface.

VHB Landing Pads

Suitable for secure permanent mounting to many surfaces including fiberglass RV/camper roofs, aluminum truck cabs, boat, decks, glass, sunroof, etc. Using pre-applied 3M 5952 VHB tape, there is approximately 110 lbs (50 kg) on each Landing Pad, for a total of 440 lbs (200 kg) for each set of 4.

VHB Disc

Powder coated, weather resistant steel disk with 3M, 5952 VHB tape pre-applied. Allows magnetic surface to be installed on non-magnetic substrates to allow for convenient magnet usage. Each VHB Disc has approximately 110 lbs (50 kg) of holding force. **Must Be used in conjunction with Rubber Coated Magnets, cannot be used alone.*

Through Bolting Kit

18-8 stainless steel hardware (4x bolts, washers, nylock nuts) For installation on roof rack or direct to sheet metal. Can be used with nearly any surface, requires substrate penetration.

Swivel Mounts

Allows any of the above mounting accessories to be installed on angled surfaces. If articulation is required, Swivel Mounts provide angled mounting holes and additional articulation to mount any accessory to a curved surface.



Contact@trioflatmount.com



www.TrioFlatMount.com



17632 Metzler Lane, Unit 102,
Huntington Beach, CA 92647