

Enclosure For Large DC MCCB

- IP65 Rated
- Designed For Large Battery System
- Busbars as Accessory for Less Cable Work
- Compatible with Noark DC MCCB

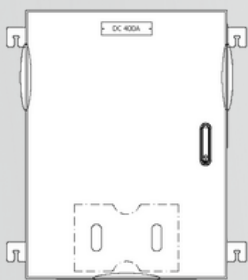
Specification

| | |
|---------------------------|--|
| Ingress Protection Rating | IP 65 |
| Dimension L x W x D (mm) | 800 x 600 x 350 (400A), 800 x 600 x 350 (630A) |
| Weight | 25 kg |
| Installation | Wall mounted |
| Cable Entry | Side and bottom entry |
| Gland Diameter | 36mm x 4 and 25mm x 1 |
| Colour Code | RAL 7035 Light Grey, Black (Optional) |

Order Information

| Order code | Model | Description | Compatible MCCB |
|------------|-------------------|---|----------------------------|
| 991021 | Ex9BBE-400 | Enclosure - 400A, 4 connections (cable size 185 - 240mm ²) | Noark Ex9MD2 Up to 400A |
| 991022 | Ex9BBE-400-Busbar | Busbar kit - 400A with provision for 8 connections (cable size 185 - 240mm ²) | |
| 991023 | Ex9BBE-630 | Enclosure - 630A, 4 connections (cable size 185 - 240mm ²) | Noark Ex9MD3 Up to 630A |
| 991024 | Ex9BBE-630-Busbar | Busbar kit - 400A with provision for 8 connections (cable size 185 - 240mm ²) | |

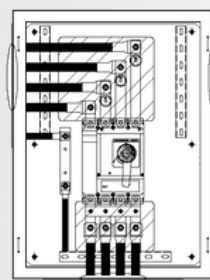
Schematics



FRONT VIEW



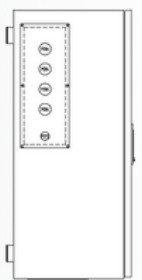
INSIDE VIEW
(WITH INNER DOOR)



INSIDE VIEW
(WITHOUT INNER DOOR)



SECTION VIEW
(A-A)



SIDE VIEW

GET IN TOUCH

v1.0